

introducing our new

R•TEC AUTOMATION®

1 3/8" H-Rail drapery traverse systems



Aria® Metal Hardware

The Aria® Metal Hardware line offers trend-right designer hardware collections across two pole diameter options providing a beautiful range of finial designs and a full line of coordinating accessories.

- The new **R-TEC** AUTOMATION® 1 3/8" H-Rail Traverse collection combines motorized technology with the beauty of Aria Metal Hardware, integrating smart solutions designed for residential and commercial environments.
- The 1 3/8" H-Rail R-TEC Automation and Baton Draw options coordinate with the 1 3/8" Antiquities collection, combining innovative functionality with layered, multi-pass finial and finish options.
- The 1 1/8" diameter Baton Draw H-Rail, Atelier, Artisan, Abode and French Return collections are designed to work seamlessly with each other, allowing you to create customized mix-and-match decorative hardware designs and solutions.

1 3/8" diameter

new



4 R-TEC Automation® H-Rail Traverse



8 Baton Draw H-Rail Traverse



12 Antiquities collection

1 1/8" diameter



20 Baton Draw H-Rail Traverse



24 Atelier collection modern



28 Artisan collection eclectic



34 Abode collection transitional



40 French Returns

introducing our new **R-TEC** AUTOMATION[®] 1 3/8" H-Rail traverse new



R-TEC Automation[®] H-Rail Traverse

The R-TEC Automation[®] 1 3/8" H-Rail Traverse collection combines motorized technology with the beauty of AriA[®] Metal Hardware, integrating smart solutions designed for residential and commercial environments.

The slim drapery motor is designed to install seamlessly behind the drapery panel with quiet start / stop operation, the ability to easily charge without having to remove the motor and up to 500 open and close cycles per charge, providing the ultimate integrated functionality without compromising the look of your window treatment.

See pages 4 - 7.

Coordinates with 1 3/8" Antiquities Collection finials and finishes on pages 13 - 17.



R-TEC Smart Controls

The R-TEC Automation[®] Hub and App integration allow draperies to be controlled directly from a smartphone or integrated device while at home or away. Now available in the Apple[®] App store or Google Play[™], search for Rowley or use the QR codes below to download the new R-TEC Automation[®] App.

As an alternative, remotes and wall switches allow for individual, group and all control for a customized solution with 1, 5 and 15 channel options.

See page 7.



For more R-TEC Automation[®] window solution options, view our compatible shade systems at bit.ly/R-TEC-Automation-Shades.

1 3/8" H-Rail traverse new

- The R-TEC Automation® 1 3/8" H-Rail
- Traverse collection combines motorized
- technology with the beauty of AriA®
- Metal Hardware, integrating smart
- solutions designed for residential and
- commercial environments.



unrivaled design

R-TEC Automation® products are meticulously designed to combine beauty, form and function with superior performance.

intuitive programming

R-TEC Smart Controls offer modern design and lifestyle options with easy programming and the ability to integrate with the latest smart home solutions.

uncompromising quality & service

We proudly stand behind our products by providing expert services to support you along with a slim drapery motor backed by a 5 year warranty.

unsurpassed value

Provide your clients with innovative window treatment solutions that fit their budget expectations with R-TEC Automation® drapery and shade systems.

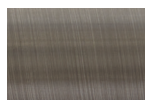
introducing our new automated 1 3/8" H-Rail traverse

new

1 3/8" H-Rail finishes



Polished
Nickel
PN



Antique
Pewter
AP



Iron
Copper
IC



Antique
Brass
AB



Brushed
Bronze
BZ



Oil Rubbed
Bronze
ORB



Satin Black
SK

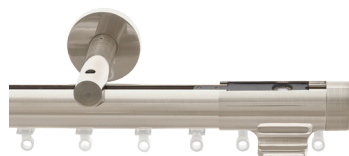


Matte Black*
MK
(coordinates with
VZ & DRB finials)

1 3/8" H-Rail traverse systems

Li-ion Battery or 110v AC Power, Ripplefold or Pinch Pleat.

single



- 1 3/8" Single H-Rail Traverse System
- Wall Mount
 - 3 1/2" or 6" projection

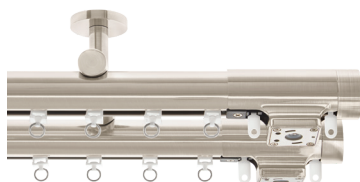
double



- 1 3/8" Double H-Rail Traverse System
- Wall Mount
 - 3" and 7 1/2" projection



- 1 3/8" Single H-Rail Traverse System
- Ceiling Mount
 - 2 3/8" drop



- 1 3/8" Double H-Rail Traverse System
- Ceiling Mount
 - 2 5/8" drop, 4 1/2" apart



- 1 3/8" Single H-Rail Traverse System
- Low Profile Ceiling Mount
 - 5/32" drop

1 3/8" H-Rail Traverse Systems include Plain End Caps FMH138104/, but are designed to work with all 1 3/8" Antiquities finials on pages 14 - 17.



finials & end caps

1 3/8" H-Rail Traverse Systems are designed to work with all AriA® 1 3/8" Antiquities finials on pages 14 - 17.



Plain End Caps FMH138104/ included; order our Saxon End Cap FMH138190/ (shown) for a more stylized look, or select from 10 finial designs.

R-TEC carriers

1 3/8" H-Rail Traverse Systems work with Pinch Pleat and Ripplefold Roller Carriers.



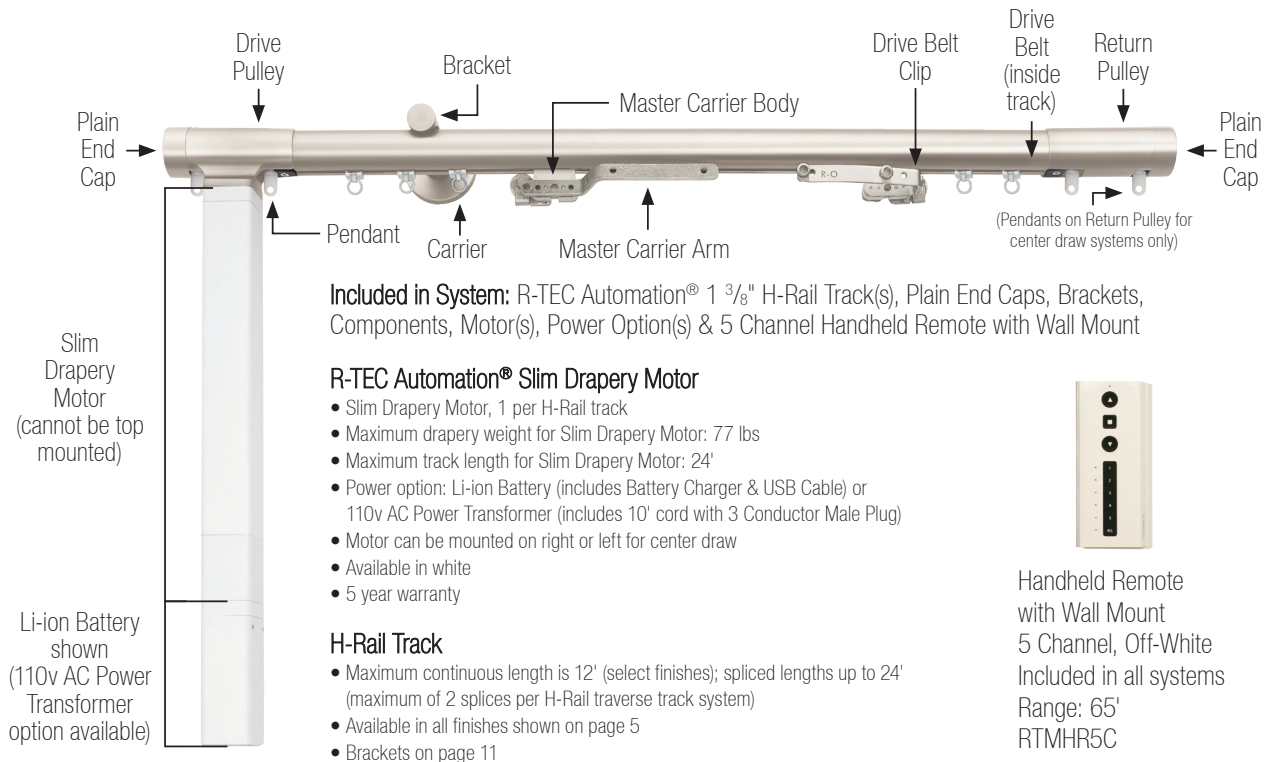
Pinch Pleat Carriers
CP40



Ripplefold Roller Carriers
R4060/ R4100/
R4080/ R4120/

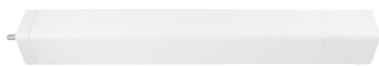
For more details on Pinch Pleat and Ripplefold carriers, please see the price list.

R-TEC AUTOMATION® 1 3/8" H-Rail traverse new



motor & motor components new

Li-ion Battery Powered



Slim Drapery Motor
RTMLDSS50



Li-ion Battery
RTMLDSSB



Battery Charger
RTMLDSSBC

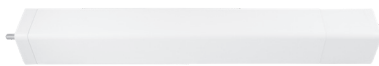


USB Charger Cable
RTMLDSSUSB



Solar Panel Battery Charger - sold separately
(includes L-Bracket, Cables & Fastener)
RTMSOLAR2

110v AC Powered



Slim Drapery Motor
RTMLDSS50



110v AC Power Transformer 10' - RTMDSSPT (plug included)

110v AC Power Transformer 30' - RTMDSSPTCS (plug not included)



Plug
RTMP

features



2-Way RF Communication

Integrated radio frequency control allows for easy programming of individual, group or all control across window treatments.



Adjustable Speed

Choose from three options to customize the open / close speed of the drapery treatment.



Preferred Open / Close Limit Settings

Electronic "autoset" limits accurately program preferred open and close limit settings.



Favorite Position

Allows a most used or favorite position to be set between open and close limit settings.



Obstruction Detection

If the drapery motion is obstructed while the motor is running, the motor stops automatically to prevent damage.



Manual Override

Permits the drapery to be adjusted manually without the use of a remote or in the event of a power outage.



Quiet Operation

Powerful, smooth and quiet operation suitable for both residential and commercial environments.

R-TEC Smart Controls



R-TEC Hub
2-way RF; Wi-Fi built in
Range: 60'
RTMHUB2



The R-TEC Automation® App enables simple, intuitive control and system configuration from your smartphone or tablet.



Pair the R-TEC Hub and App with these systems (not sold by Rowley):



these additional accessories are available for purchase separately



Handheld Remote
with Wall Mount
1 Channel
Range: 65'
RTMHR1C



Handheld Remote
with Wall Mount
5 Channel
Included in all systems
Range: 65'
RTMHR5C



Handheld Remote
with Wall Mount
15 Channel
Range: 65'
RTMHR15C



Surface Mount Wall
Switch, 5 Channel
Range: 65'
RTMWSR5C



Wall Box Mount Switch,
15 Channel
Range: 65'
RTMWSR15C



Interior Sun Sensor
Range: 65'
RTMISS



ARC USB Signal Repeater
Extends the wireless range of the R-TEC Hub and Remotes up to 60'
Maximum 2 repeaters per system or network; (color may vary)
RTMUSR



Wall Charger for USB
Signal Repeater
RTMLWCW
(color may vary)



**custom
solutions**

Save yourself valuable time, our in-house experts will fully assemble your R-TEC Automation® H-Rail traverse system, custom cut to your exact specification. Ships in 10 - 15 business days. See pages 3 - 4 of the price list for ordering information. Previously purchased Manual Baton Draw H-Rail systems cannot be motorized.



manual

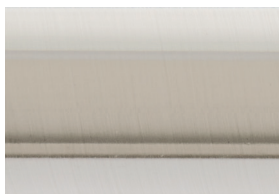
1 3/8" H-Rail traverse

- 1 3/8" Baton Draw H-Rail provides the perfect
- combination of fashion and function in a larger
- diameter, creating more sophisticated solutions for
- both residential and commercial environments.

manual 1 3/8" H-Rail traverse



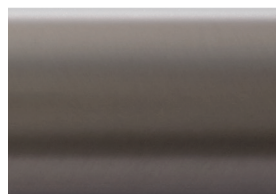
1 3/8" H-Rail finishes



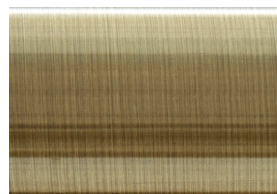
Polished Nickel
PN



Antique Pewter
AP



Iron Copper
IC



Antique Brass
AB



Brushed Bronze
BZ



Oil Rubbed Bronze
ORB



Satin Black
SK



Matte Black*
MK (coordinates with VZ & DRB finials)

batons



Plastic - A Steel - S

Available Finishes:
* Brushed Nickel - BN
Antique Pewter - AP
Iron Copper - IC
Antique Brass - AB
Brushed Bronze - BZ
Oil Rubbed Bronze - ORB
* Matte Black - MK
Satin Black - SK

36" Metal Baton
FM312A/ FM312S/

48" Metal Baton
FM314A/ FM314S/

60" Metal Baton
FM316A/ FM316S/

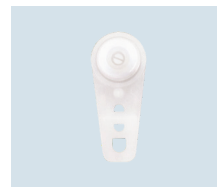
* For PN, order BN.
For VZ & DRB,
order MK.



For Handicap Batons,
see page 18.

manual carriers

1 3/8" H-Rail Traverse Systems work with Pinch Pleat and Ripplefold Roller Carriers.



Pinch Pleat Carriers
CP10



Ripplefold Roller Carriers
R2060/ R2100/
R2080/ R2120/

For more details on Pinch Pleat and Ripplefold carriers,
please see the price list.



**custom
solutions**

Save yourself valuable time, our in-house experts will fully assemble your Baton Draw H-Rail traverse system, custom cut to your exact specification. Ships in 5 business days! See page 10 of the price list for more information.

1 3/8" H-Rail traverse kits

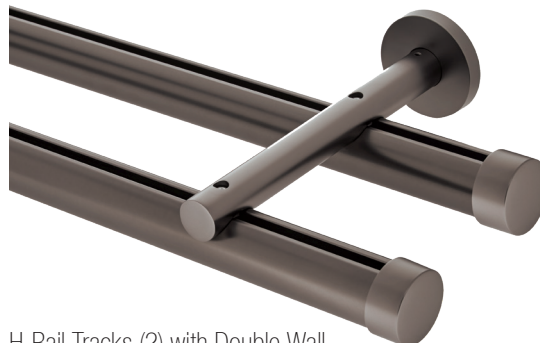
Available lengths: 6', 8' & 12'. Maximum continuous length is 12' in all finishes except BZ, ORB or IC which is 8'. Longer lengths will be spliced up to 24'. H-Rail Kits include Plain End Caps and Brackets, and are designed to work with all AriA® 1 3/8" Antiquities Finials on pages 14 - 17. Baton Draw. Pinch Pleat or Ripplefold. Kit components are sold separately. See price list for component options.

single rod kits // wall mount



H-Rail Track (1) with 3 1/2" or 6" Wall Brackets (4) for 6' & 8' kits, (5) for 12' kits and Plain End Caps (2)
3 1/2" projection - FMH138400/
6" projection - FMH138401/

double rod kit // wall mount



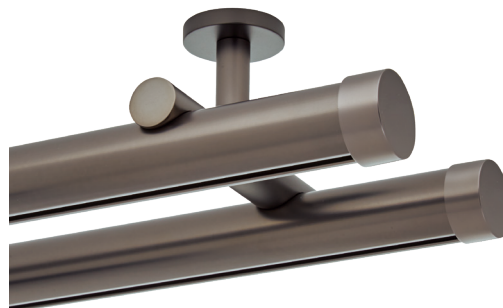
H-Rail Tracks (2) with Double Wall Brackets (4) for 6' & 8' kits, (5) for 12' kits and Plain End Caps (4)
3" and 7 1/2" projection - FMH138402/

single rod kit // ceiling mount



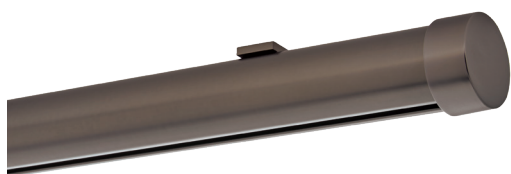
H-Rail Track (1) with Ceiling Brackets (4) for 6' & 8' kits, (5) for 12' kits and Plain End Caps (2)
2 3/8" drop - FMH138403/

double rod kit // ceiling mount



H-Rail Tracks (2) with Double Ceiling Brackets (4) for 6' & 8' kits, (5) for 12' kits and Plain End Caps (4)
2 5/8" drop, 4 1/2" apart - FMH138404/

single rod kit // low profile ceiling mount



H-Rail Track (1) with Low Profile Ceiling Brackets (4) for 6' & 8' kits, (5) for 12' kits and Plain End Caps (2)
5/32" drop - FMH138406/

mixed double rod kit // wall mount

new



H-Rail Track (1) and Fixed Pole (1) with FM138400L and Collar Brackets (4) and End Cap Finials (4)
3 1/2" and 6 1/2" projection - FMH138408/

1 3/8" H-Rail brackets

R-TEC AUTOMATION* compatible

Easy to install - attach to H-Rail track with a set screw.

Compatible with R-TEC Automation® H-Rail Systems and Manual Baton Draw H-Rail Traverse Systems and Kits.



H-Rail Wall Bracket
3 1/2" projection - FMH138400/



H-Rail Wall Bracket
6" projection - FMH138401/



H-Rail Double Wall Bracket
3" and 7 1/2" projection - FMH138402/



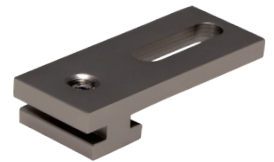
H-Rail Ceiling Bracket
2 3/8" drop - FMH138403/



H-Rail Double Ceiling Bracket
2 5/8" drop, 4 1/2" apart - FMH138404/



Ceiling Bracket Extender
2" projection - FMH138405/



H-Rail Low Profile
Ceiling Bracket
5/32" drop - FMH138406/



H-Rail Collar Bracket
FMH138408/
Fits FM138400L/



Turned Bracket for Mixed Double Rod
(for Manual Baton Draw H-Rail only)
5" - 6 1/2" projection - FM138400L/
Requires FMH138408/



**custom
solutions**

Save yourself valuable time, our in-house experts will fully assemble your Baton Draw H-Rail traverse system, custom cut to your exact specification. Ships in 5 business days! See page 10 of the price list for more information.

1 3/8" H-Rail accessories



Plain End Cap
FMH138104/



H-Rail Elbow
FMH138409/



H-Rail Splice
FMH138407



Antiquities

collection

The Antiquities collection evokes a modern interpretation of classic silhouettes embellished with multi-pass finish options in a larger scale $1\frac{3}{8}$ " diameter, creating an expanded portfolio of stunning metal hardware window design options.

Antiquities collection



1 3/8" finishes



Polished Nickel
PN



Antique Pewter
AP



Iron Copper
IC



Antique Brass
AB



Brushed Bronze
BZ



Oil Rubbed Bronze
ORB



Venetian Bronze
VZ



Dark Oil Rubbed Bronze
DRB



Satin Black
SK



Matte Black
MK (coordinates with VZ & DRB finials)



VZ



DRB

1 3/8" Antiquities finials

RTEC AUTOMATION® compatible

Avalon Ball
FM138100/



shown in DRB



PN



AP



IC



AB



BZ



ORB



VZ

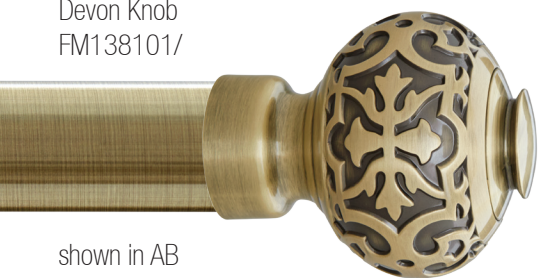


DRB



SK

Devon Knob
FM138101/



shown in AB



PN



AP



IC



AB



BZ



ORB



VZ



DRB



SK

Versailles Square
FM138105/



shown in PN



PN



AP



IC



AB



BZ



ORB



VZ



DRB



SK

1 3/8" Antiquities finials

RTEC AUTOMATION® compatible



PN



AP



IC



AB



BZ



ORB



VZ



DRB



SK



Blakely Urn
FM138102/

shown in IC



PN



AP



IC



AB



BZ



ORB



VZ



DRB



SK



Bellaire Urn
FM138103/

shown in VZ



PN



AP



IC



AB



BZ



ORB



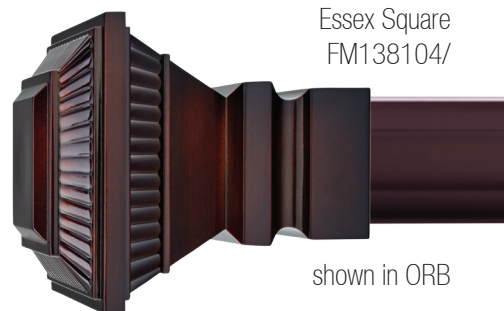
VZ



DRB



SK



Essex Square
FM138104/

shown in ORB

1 3/8" Antiquities finials

RTEC AUTOMATION® compatible

Arabesque Scroll
FM138106/



shown in DRB



PN



AP



IC



AB



BZ



ORB



VZ

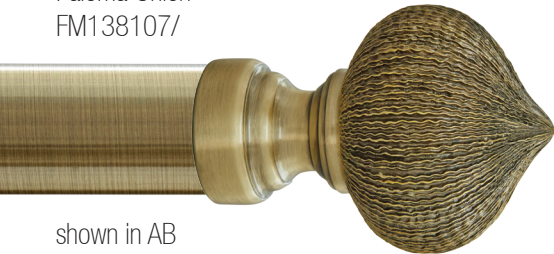


DRB



SK

Paloma Onion
FM138107/



shown in AB



PN



AP



IC



AB



BZ



ORB



VZ



DRB



SK

Saxon End Cap
FM138190/



shown in SK



PN



AP



IC



AB



BZ



ORB



VZ



DRB



SK



MK new

1 3/8" Antiquities finials

RTEC AUTOMATION® compatible



PN



AP



IC



AB



BZ



ORB



VZ



DRB



SK



PN



AP



IC



AB



BZ



ORB



VZ



DRB



SK



PN



AP



IC



AB



BZ



ORB



VZ



DRB



SK



Sterling Cage
FM138108/

shown in VZ



Montclair Urn
FM138109/

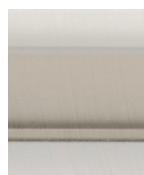
shown in AP



Avalon End Cap
FM138191/

shown in BZ

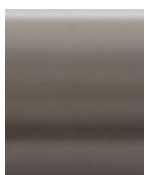
1 3/8" Antiquities accessories finishes



Polished Nickel
PN



Antique Pewter
AP



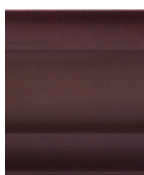
Iron Copper
IC



Antique Brass
AB



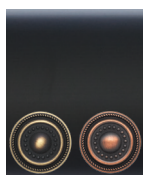
Brushed Bronze
BZ



Oil Rubbed Bronze
ORB



Satin Black
SK



Matte Black*
MK (coordinates with
VZ & DRB finials)

*For Venetian Bronze (VZ) and Dark Oil Rubbed Bronze (DRB) finials, please order the Matte Black (MK) option in poles, rings & accessories.

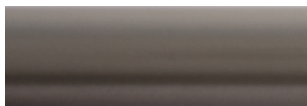
1 3/8" Antiquities poles

Fixed

6' Fixed.....FM138206/

8' Fixed.....FM138208/

12' Fixed.....FM138212/



*12' Fixed Poles available in all finishes except BZ and ORB.

*Fixed Poles can be sized to your specification for a cut charge.

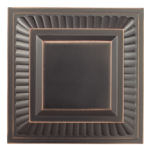
Antiquities holdbacks



Bellaire Medallion Holdback
FM138900/



Essex Medallion Holdback
FM138901/

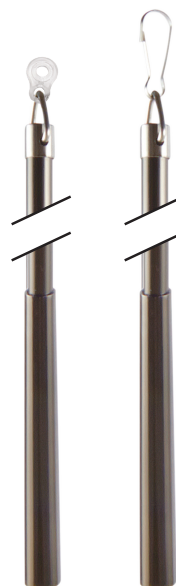


Holdback Extension - 2" increment
FM138990/



Finial Wall Mount Adaptor
FM138310/

batons



Plastic - A Steel - S

Available Finishes:

- * Brushed Nickel - BN
- Antique Pewter - AP
- Iron Copper - IC
- Antique Brass - AB
- Brushed Bronze - BZ
- Oil Rubbed Bronze - ORB
- * Matte Black - MK
- Satin Black - SK

* For PN, order BN.
For VZ & DRB, order MK.

36" Metal Baton
FM312A/ FM312S/

48" Metal Baton
FM314A/ FM314S/

60" Metal Baton
FM316A/ FM316S/

Handicap batons

new



Available Finishes:

- * Brushed Nickel - BN
- Antique Brass - AB
- Brushed Bronze - BZ
- * Matte Black - MK

* For PN, order BN.
For VZ & DRB, order MK.

48" Handicap Metal Baton
FM314HA/ FM314HS/

60" Handicap Metal Baton
FM316HA/ FM316HS/

1 3/8" Antiquities rings

All rings include plastic inserts for smoother gliding.



Ring with Eyelet
FM138200/
*Includes clips.



C-Ring with Eyelet
FM138202/
*Includes clips.



1 3/8" Antiquities brackets



Turned Brackets
3 1/2" - 4 1/2" projection - FM138400/
5" - 6 1/2" projection - FM138400L/



Double Turned Bracket
3 1/2" and 6 1/2" projection - FM138404/



Bypass Turned Bracket
3 1/2" - 4 1/2" projection - FM138408/



V-Bracket
4 1/4" - 5 1/2" projection - FM138410/



Inside Mount for Fixed Pole
FM138401/

1 3/8" Antiquities accessories



Plain End Cap
FMH138104/



Elbow
FM138402/



Splice
FM138403

manual

1 1/8" H-Rail

traverse

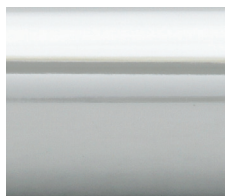
1 1/8" Baton Draw H-Rail provides the perfect combination of fashion and function, creating a sophisticated solution for both residential and commercial environments.



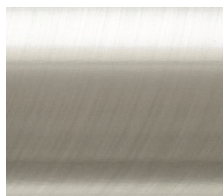
manual 1 1/8" H-Rail traverse



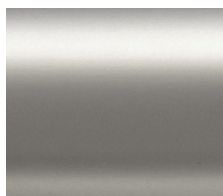
1 1/8" H-Rail finishes



Chrome
CH



Brushed Nickel
BN



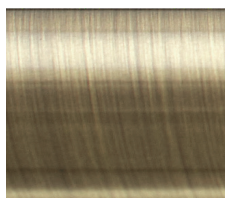
Satin Nickel
SN



Brushed Black Nickel
BBN



Satin Gold
SG



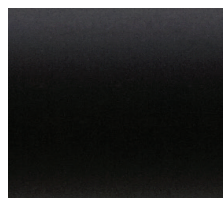
Antique Brass
AB



Oil Rubbed Bronze
ORB

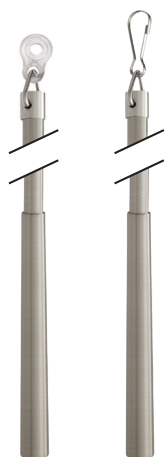


Brushed Bronze
BZ



Matte Black
MK

batons



Plastic - A Steel - S

Available Finishes:
Chrome - CH
Brushed Nickel - BN
Satin Nickel - SN
Brushed Black Nickel - BBN
Satin Gold - SG
Antique Brass - AB
Oil Rubbed Bronze - ORB
Brushed Bronze - BZ
Matte Black - MK

36" Metal Baton
FM312A/ FM312S/

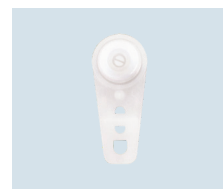
48" Metal Baton
FM314A/ FM314S/

60" Metal Baton
FM316A/ FM316S/



manual carriers

1 3/8" H-Rail Traverse Systems work with Pinch Pleat and Ripplefold Roller Carriers.



Pinch Pleat Carriers
CP10



Ripplefold Roller Carriers
R2060/ R2100/
R2080/ R2120/

For more details on Pinch Pleat and Ripplefold carriers,
please see the price list.



**custom
solutions**

Save yourself valuable time, our in-house experts will fully assemble your Baton Draw H-Rail traverse system, custom cut to your exact specification. Ships in 5 business days! See page 17 of the price list for more information.

1 1/8" H-Rail traverse kits

Available lengths: 6', 8' & 12'. 12' lengths are available in all finishes except CH, SG, BZ and ORB. Longer lengths will be spliced up to 24'. H-Rail Kits include Plain End Caps and Brackets, and are designed to work with all AriA® 1 1/8" Atelier, Artisan and Abode Finials. Baton Draw. Pinch Pleat or Ripplefold. Kit components are sold separately. See price list for component options.

single rod kits // wall mount



H-Rail Track (1) with 3 1/2" or 6" Wall Brackets (4) for 6' & 8' kits, (5) for 12' kits and Plain End Caps (2)
3 1/2" projection - FMH28400/
6" projection - FMH28401/

double rod kit // ceiling mount



H-Rail Tracks (2) with Double Ceiling Brackets (4) for 6' & 8' kits, (5) for 12' kits and Plain End Caps (4)
2 5/8" drop, 4 1/2" apart - FMH28404/

single rod kit // ceiling mount



H-Rail Track (1) with Ceiling Brackets (4) for 6' & 8' kits, (5) for 12' kits and Plain End Caps (2)
2 3/8" drop - FMH28403/

double rod kit // wall mount



H-Rail Tracks (2) with Double Wall Brackets (4) for 6' & 8' kits, (5) for 12' kits and Plain End Caps (4)
3" and 7 1/2" projection - FMH28402/

single rod kit // low profile ceiling mount



H-Rail Track (1) with Low Profile Ceiling Brackets (4) for 6' & 8' kits, (5) for 12' kits and Plain End Caps (2)
5/32" drop - FMH28406/

mixed double rod kit // wall mount



H-Rail Track (1) and Fixed Pole (1) with FM400L and Collar Brackets (4) for 6' & 8' kits, (5) for 12' kits and Plain End Caps (4)
3 1/2" and 6 1/2" projection - FMH28408/

1 1/8" H-Rail brackets

Easy to install - attach to H-Rail track with a set screw.



H-Rail Wall Bracket
3 1/2" projection - FMH28400/



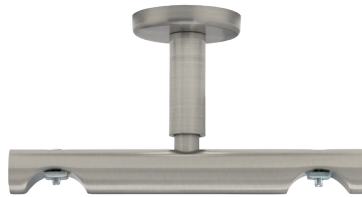
H-Rail Wall Bracket
6" projection - FMH28401/



H-Rail Double Wall Bracket
3" and 7 1/2" projection - FMH28402/



H-Rail Ceiling Bracket
2 3/8" drop - FMH28403/



H-Rail Double Ceiling Bracket
2 5/8" drop, 4 1/2" apart - FMH28404/



Ceiling Bracket Extender
2" projection - FMH28405/



H-Rail Low Profile
Ceiling Bracket
5/32" drop - FMH28406/



H-Rail Collar Bracket
FMH28408/
Fits FM400L/



Turned Bracket
5" - 6 1/2" projection - FM400L/
Requires FMH28408/



**custom
solutions**

Save yourself valuable time, our in-house experts will fully assemble your Baton Draw H-Rail traverse system, custom cut to your exact specification. Ships in 5 business days! See page 17 of the price list for more information.

1 1/8" H-Rail accessories



Plain End Cap
FM104/



H-Rail Elbow
FMH28409/



H-Rail Connector / Splice
Brass only
FMH28407

our modern
Atelier collection

• The 1 1/8" Atelier Collection features modern finial designs
• in contemporary finishes that can be mixed and matched to
• create unique drapery hardware designs.



Atelier collection



1 1/8" Atelier Finials



CH/CH



SN/CH



SG/SG



BBN/CH



MK/BBN



MK/SG



Tapered Ball
FM600/

shown in MK/SG



CH



SN



SG



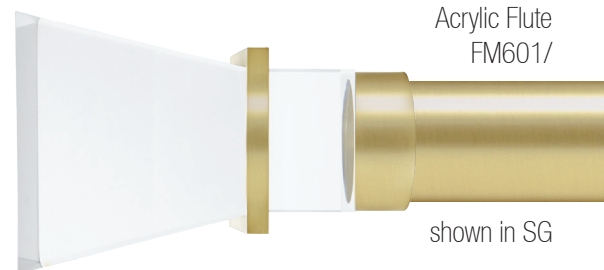
BZ



BBN



MK



Acrylic Flute
FM601/

shown in SG

1 1/8" Atelier finials

Faceted Square End Cap
FM603/



shown in SN



CH



SN



SG



BZ



BBN



MK

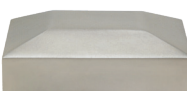
Beveled Square End Cap
FM604/



shown in BZ



CH



SN



SG



BZ



BBN



MK

Beveled Disc End Cap
FM605/



shown in SG



CH



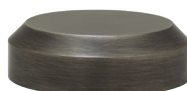
SN



SG



BZ



BBN



MK

1 1/8" Atelier finials



CH



SN



SG



BZ



BBN



MK



CH



SN



SG



BZ

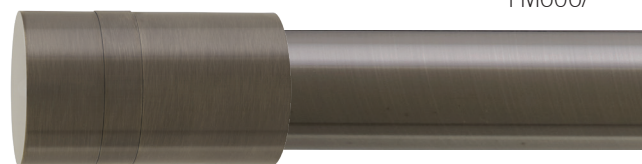


BBN



MK

Stacked Cylinder
FM606/



shown in BBN

Stacked Cube
FM607/

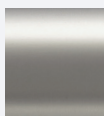


shown in CH

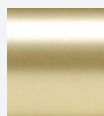
design your own mix & match metal finial



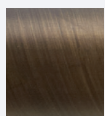
CH



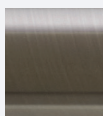
SN



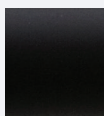
SG



BZ



BBN



MK

step 1 | Select a 1 1/8" Metal Base - Cylinder or Cube.

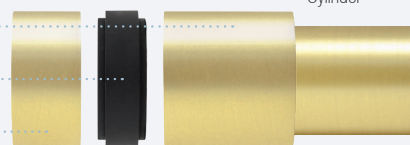
step 2 | Pick a coordinating metal finish for the middle band.

step 3 | Choose a Metal Cap.

Metal Base | FM6081/

Metal Band | FM6082/

Metal Cap | FM6083/

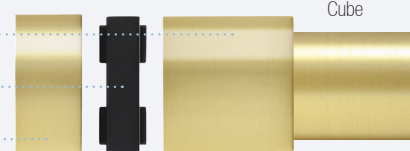


Cylinder

Metal Base | FM6091/

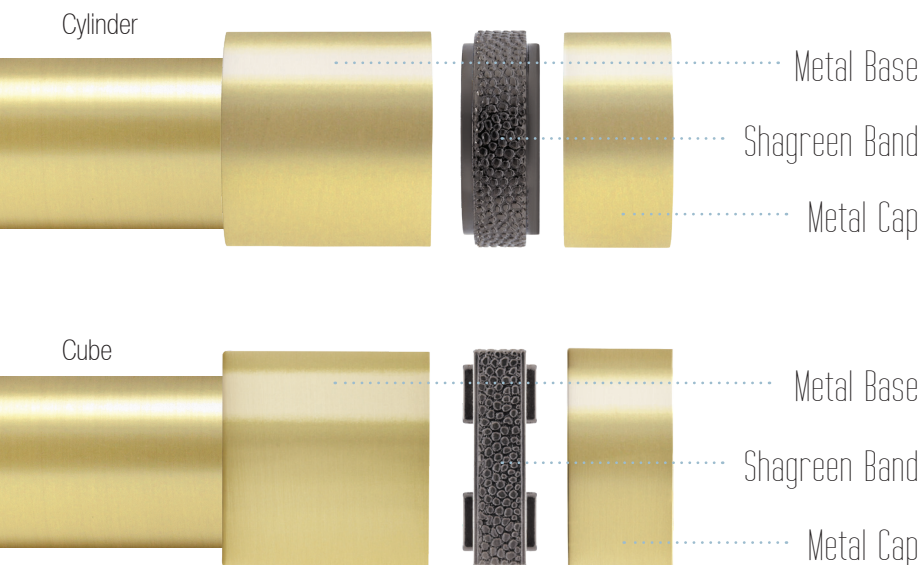
Metal Band | FM6092/

Metal Cap | FM6093/



Cube

design your own mix & match shagreen finial



step 1 | Select a 1 1/8" Metal Base. Pick from two styles: Cylinder or Cube.



Cylinder Metal Base
FM6081/



Cube Metal Base
FM6091/

step 2 | Pick a coordinating shagreen finish for the middle band*.



Cylinder Shagreen Band
FM6082/



Cube Shagreen Band
FM6092/

step 3 | Choose a Metal Cap.

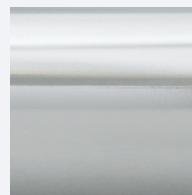


Cylinder Metal Cap
FM6083/

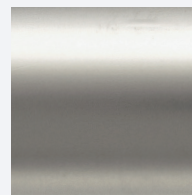


Cube Metal Cap
FM6093/

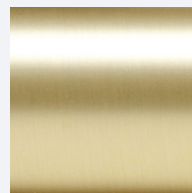
metal finishes



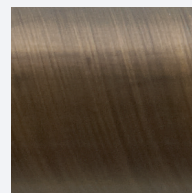
Chrome
CH



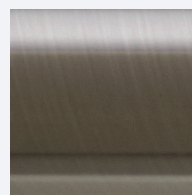
Satin Nickel
SN



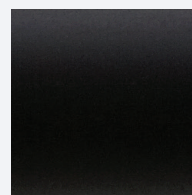
Satin Gold
SG



Brushed Bronze
BZ



Brushed Black Nickel
BBN

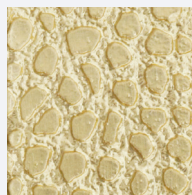


Matte Black
MK

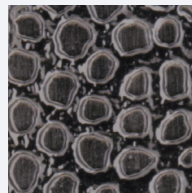
shagreen finishes*



Chrome
T/CH



Satin Gold
T/SG



Brushed Black Nickel
T/BBN

*Band options only.



Mix & Match
Cylinder Finial

shown in Chrome with
Satin Gold Shagreen Band



Artisan collection

- With this eclectic collection, we are
- focused on the art of detail. Our
- philosophy is to incorporate innovative
- design techniques and diverse materials
- into a stylish drapery hardware offering.

Artisan collection



1 1/8" Artisan finials



BN/MK



SN



BBN



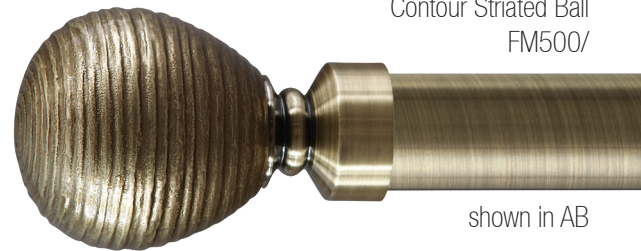
AB



ORB



BZ



Contour Striated Ball
FM500/

shown in AB



NI/SN



PT/MK



AM/ORB



Rustic Forged Ball
FM501/

shown in PT/MK



AM/MK



BR/BZ



BR/MK

1 1/8" Artisan finials

Craftsman Wood Square
FM505/



shown in WA/MK



ES/BN



ES/MK



ES/ORB



MA/SN



WA/MK



PE/SN

Vintage Stone Knob
FM506/



shown in BN



BN



SN



AB



BZ



MK

Fluted Stone Trumpet
FM507/



shown in BZ



BN



BBN



AB



BZ



MK

1 1/8" Artisan Finials



BN



SN



AB



ORB



BZ

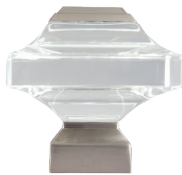


MK



Deco Glass Trumpet
FM502/

shown in ORB



BN



BBN



AB



ORB



BZ



MK



Beveled Glass Square
FM503/

shown in BBN



ES/BN



MA/BN



MA/MK



WA/SN



PE/SN



PE/MK



Carved Facet Ball
FM504/

shown in MA/BN

Abode

collection

This transitional collection is elemental and essential. Each finial has been designed to transcend time while combining the elements of quality, beauty and value.



Abode collection

1 1/8" Abode finials



BN



SN



BBN



SG



AB



ORB



BZ



MK



BN



SN



BBN



SG



AB



ORB



BZ



MK



BN



SN



BBN



SG



AB



ORB



BZ

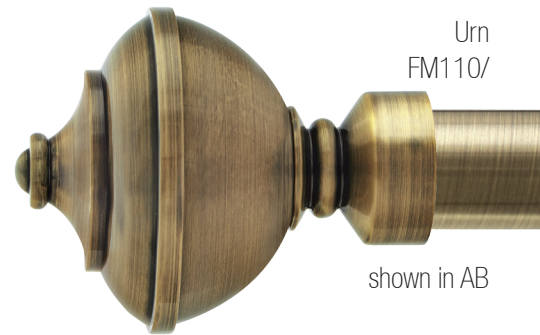


MK



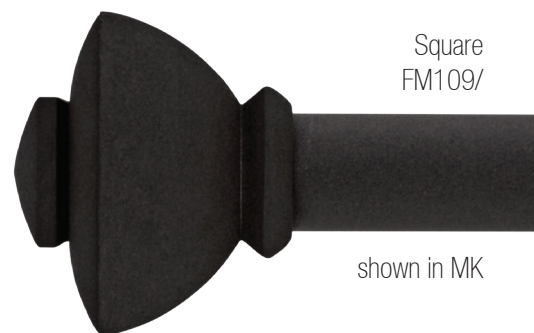
Ball
FM100/

shown in BN



Urn
FM110/

shown in AB



Square
FM109/

shown in MK

1 1/8" Abode finials

Stacked Square
FM119/



shown in ORB



BN



SN



BBN



SG



AB



ORB



BZ



MK



BN



SN



BBN



SG



AB



ORB



BZ



MK



BN



SN



BBN



SG



AB



ORB



BZ



MK

Trumpet
FM112/



shown in SG

1 1/8" Abode finials



BN

SN

BBN

SG

AB



ORB

BZ

MK



Cage
FM116/

shown in BBN



BN

SN

BBN

SG

AB



Blown Glass Ball
FM107/

shown in BZ



ORB

BZ

MK



BN

SN

BBN

SG

AB



Plain End Cap
FM104/

shown in SN



ORB

BZ

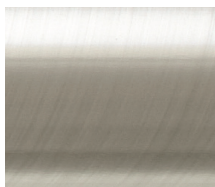
MK

CH

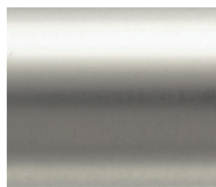
1 1/8" accessories finishes



Chrome
CH



Brushed Nickel
BN



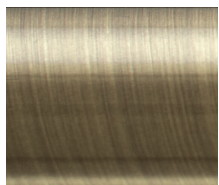
Satin Nickel
SN



Brushed Black Nickel
BBN



Satin Gold
SG



Antique Brass
AB



Oil Rubbed Bronze
ORB



Brushed Bronze
BZ



Matte Black
MK

1 1/8" poles

Fixed

- 4' Fixed.....FM284/
- 6' Fixed.....FM286/
- 8' Fixed.....FM288/
- 12' Fixed.....FM2812/



*12' Fixed Poles are available in all finishes except BZ and ORB.
*Poles can be sized to your specification for a cut charge.

Telescoping

- 28" - 48".....FMTR281/
- 48" - 84".....FMTR282/
- 66" - 120".....FMTR283/

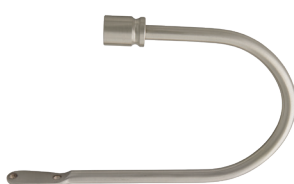


*Telescoping poles only work with Artisan and Abode finials.
*Available in all finishes except CH.

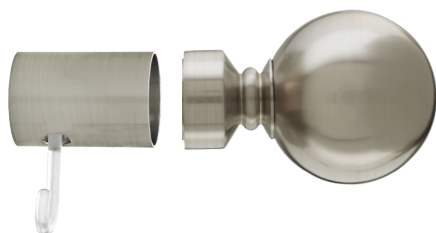
holdbacks



Ball Holdback
FM300/



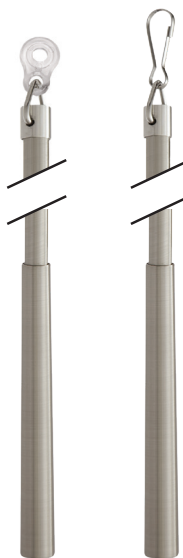
Cylinder Holdback
FM302/



Finial Wall Mount Adaptor
FM310/

*Works with Artisan and Abode finials.

batons



Plastic - A Steel - S

Available Finishes:

Chrome - CH
Brushed Nickel - BN
Satin Nickel - SN
Brushed Black Nickel - BBN
Satin Gold - SG
Antique Brass - AB
Oil Rubbed Bronze - ORB
Brushed Bronze - BZ
Matte Black - MK

36" Metal Baton
FM312A/ FM312S/

48" Metal Baton
FM314A/ FM314S/

60" Metal Baton
FM316A/ FM316S/

Handicap batons

new



Available Finishes:

Brushed Nickel - BN
Satin Nickel - SN
Antique Brass - AB
Brushed Bronze - BZ
Matte Black - MK

48" Handicap Metal Baton
FM314HA/ FM314HS/

60" Handicap Metal Baton
FM316HA/ FM316HS/

1 1/8" rings

All rings include plastic inserts for smoother gliding.



Ring with Eyelet
FM200/
*Includes clips.



C-Ring with Eyelet
FM202/
*Includes clips.

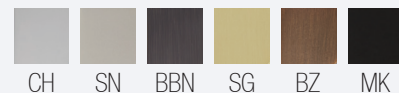


Square Ring with Eyelet
FM204/
*Includes clips.

coordinates with our
modern Atelier collection

pages 24 - 27

Available finishes:



1 1/8" brackets



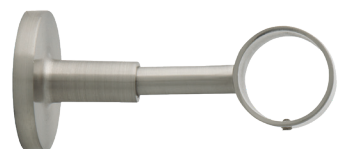
Turned Brackets
3 1/2" - 4 1/2" projection - FM400/
5" - 6 1/2" projection - FM400L/



Double Turned Bracket
3 1/2" and 6 1/2" projection - FM404/



Bypass Turned Bracket
3 1/2" - 4 1/2" projection - FM408/



Orbital Brackets
2 1/2" projection - FM405/
3 1/2" projection - FM406/
6" projection - FM407/

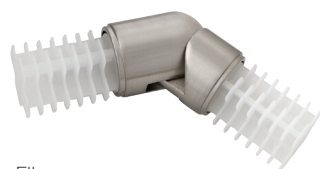


Inside Mount for Fixed Pole
FM401/

1 1/8" accessories



Plain End Cap
FM104/



Elbow
FM402/



Splice
FM403



Plastic Plug
FM118PL
(fits Atelier finials)

French Returns

- Our curved 1 1/8" French Return elbows with stylish mounting plates allow panels to wrap all the way to the wall for a clean transitional look and can be paired with our
- French Return Bands to help reduce sidelight.



French Returns



1 1/8" French Returns



BN



ORB



BZ



MK



1 1/8" French Return with Faceted Square Mounting Plate
4" and 6" projection - FM118440/

shown in MK



BN



ORB



BZ



MK



1 1/8" French Return with Beveled Round Mounting Plate
4" and 6" projection - FM118441/

shown in MK

French Return bands

Bands can be used to secure the drapery ensuring minimal light gap or to cover the seams of the pole.



BN



ORB



BZ



MK

1 1/8" French Return Band
FM118449/



pair with our 1 1/8"
coordinating rings
& support brackets

page 39

sales tools



R-TEC Automation® Display Kit
RTMDK (new) (Case & Kit*)

*R-TEC Smart Controls not included;
see page 7 for our selection.

Order modules separately:

AriA® 1 3/8" H-Rail Module - RTMDK/FMH (new)

Drapery Motor + Battery Kit - RTMLDKIT (new)



1 3/8" Antiquities Wall Mount Display
FM4138/W

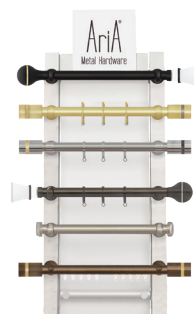
R-TEC Automation® Retro Wall Mount Display
CSRTMFMH138/W (new)



1 3/8" Antiquities Table Top Display
FM4138/T (new)



1 1/8" Portable Display Kit
FMIHS/3



1 1/8" Atelier Wall Mount Display
FM3A118/W



1 1/8" Atelier Table Top Display
FM3A118/T (new)



1 1/8" Artisan Portable Display Kit
FMPDK/1



1 1/8" AriA Wall Mount Display
FM4118/W



1 1/8" Artisan Table Top Display
FM4118/T (new)



1 3/8" Antiquities Finish Sample Ring
FM138FS/1



1 1/8" Finish Sample Ring - FMFS/4
1 1/8" Atelier Retro Finish Sample Ring
FMRFS/1



1 1/8" Abode Table Top Display
FM4118AB (new)



RM COCO - TO PLACE AN ORDER

Phone 1-800-325-8025
573-334-0517

Fax 1-800-501-6810
573-334-7483

E-Mail customerservice@rmcoco.com

Website www.rmcoco.com



2021 product catalog

© 2021 Rowley® Company, LLC. All rights reserved.
Aria® is a registered trademark of Rowley® Company, LLC.